

Marisol

Quilt design by Denise Russell.



Quilt size: 75" x 90"

Skill Level: Intermediate

Blank Quilting Corporation
49 West 37th Street ♦ New York, NY 10018
Tel: 800-294-9495 ♦ Fax: 212-679-4578
www.blankquilting.net

facebook

Free Project
NOT FOR RESALE

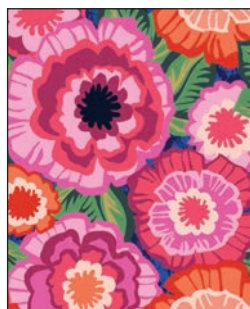
Marisol ~ Fabrics in the Collection



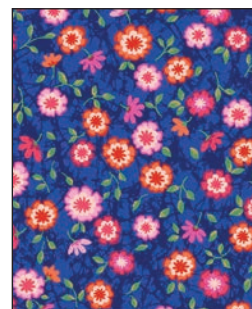
1220-22 Large Floral
Pink



1221-66 Leaf Allover
Green



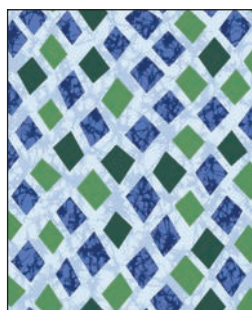
1222-22 Packed Floral
Pink



1223-77 Mini Floral
Navy



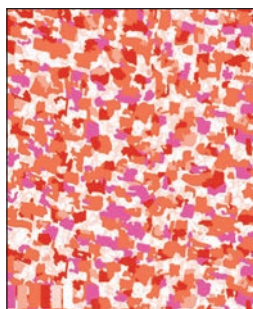
1224-22 Textured
Diamonds - Pink



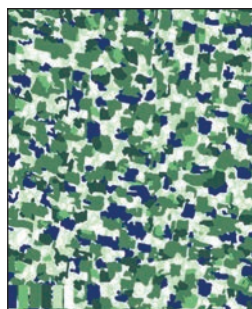
1224-70 Textured
Diamonds - Lt. Blue



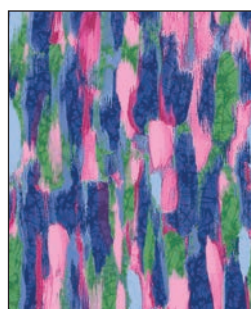
1225-75 Bouquets
Med. Blue



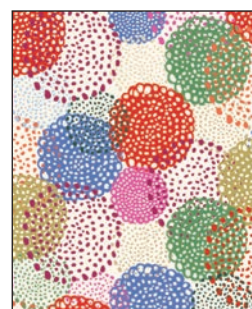
1226-33 Abstract
Geometric - Orange



1226-66 Abstract
Geometric - Green



1227-77 Brushstrokes
Navy



1228-41 Dotted Floral
Ivory

Selected fabric from the JotDot
Collection



9570-09 Marshmallow

Selected fabric from the Urban Legend
Collection by Tana Mueller



7101-77 Navy

Marisol - Quilt 1

Page 1

Materials

Yardages and cutting instructions are based on 42" of usable fabric width.

3/8 yard 1225-75 Bouquets - Med. Blue
3/8 yard 1221-66 Leaf Allover - Green
3/8 yard 1227-77 Brushstrokes - Navy
3/8 yard 1226-33 Abstract Geometric - Orange
3/8 yard 1226-66 Abstract Geometric - Green
1/2 yard 1228-41 Dotted Floral - Ivory
5/8 yard 1220-22 Large Floral - Pink
3/4 yard 1224-22 Textured Diamonds - Pink
3/4 yard 7101-99 Urban Legend - Navy
7/8 yard 1222-22 Packed Floral - Pink
1-1/2 yards 1223-77 Mini Floral - Navy
1-1/2 yards 1224-70 Textured Diamonds - Lt. Blue
4 yards 9570-09 JotDot - Marshmallow
5-5/8 yards 1220-22 Large Floral - Pink for backing
83" x 98" piece of Air Lite batting

Cut Fabrics

*Note: All strips are cut across the width of the fabric (WOF) from selvage to selvage unless otherwise noted. If cut across the length of the fabric (LOF), the **LOF** notation will be indicated.*

From each:

1225-75 Bouquets - Med. Blue
1227-77 Brushstrokes - Navy
1226-66 Abstract Geometric - Green
*Cut four 2-1/8" x WOF strips.

From each:

1221-66 Leaf Allover - Green
1226-33 Abstract Geometric - Orange
*Cut four 2-1/4" x WOF strips.

From 1228-41 Dotted Floral - Ivory:

*Cut three 4-3/8" x WOF strips. Sub-cut twenty 4-3/8" squares; cut once diagonally. (A)

From 1220-22 Large Floral - Pink:

*Cut two 7-1/2" x WOF strips. Sub-cut ten 7-1/2" squares.

From 1224-22 Textured Diamonds - Pink:

*Cut four 2-1/4" x WOF strips.
*Cut three 4-3/8" x WOF strips. Sub-cut twenty 4-3/8" squares; cut once diagonally. (B)

From 7101-99 Urban Legend - Navy:

*Cut one 2" x WOF strip. Sub-cut twelve 2" squares.
*Cut nine 2-1/2" x WOF strips for binding.

From 1222-22 Packed Floral - Pink:

*Cut four 2-1/8" x WOF strips.
*Cut two 7-1/2" x WOF strips. Sub-cut ten 7-1/2" squares.

From each:

1223-77 Mini Floral - Navy

1224-70 Textured Diamonds - Lt. Blue

*Cut four 2-1/8" x WOF strips.
*Cut three 2-1/4" x WOF strips. Sub-cut forty 2-1/4" squares.
*Cut eight 4" x WOF strips. Sub-cut eighty 4" squares.

From 9570-09 JotDot - Marshmallow:

*Cut thirty-six 2-1/4" x WOF strips. Sub-cut 640 2-1/4" squares.
*Cut three 2-5/8" x WOF strips. Sub-cut forty 2-5/8" squares; cut once diagonally. (C)
*Cut two 14-1/2" x WOF strips. Sub-cut:
- Thirty-one 2" x 14-1/2" strips; and
- Forty 2-5/8" squares; cut once diagonally. (C)
*Cut four 2-1/2" x WOF strips for border 1 (top/bottom).
*Cut four 2-3/4" x WOF strips for border 1 (sides).

Assemble Blocks

Note: Measurements include 1/4" seam allowances. Sew with right sides together unless otherwise stated. If no direction is specified, press seams toward the darker fabric.

1. Sew two 9570-09 JotDot - Marshmallow triangles C to two adjacent sides of one 2-1/4" 1224-70 Textured Diamonds - Lt. Blue square (*figure 1, next page*). Press open and trim ears. Repeat with the remaining Textured Diamonds - Lt. Blue squares to make forty units.

Marisol - Quilt 1

Page 2



Figure 1 – Make 40.

2. Sew one 1228-41 Dotted Floral – Ivory triangle A to each step 1 unit (*figure 2*). Press seams to the Ivory triangle.



Figure 2

3. Draw a diagonal line on the wrong side of the 2-1/4" 9570-09 JotDot – Marshmallow squares. With the right sides together, place one marked Marshmallow square on a corner of one 4" 1224-70 Textured Diamonds – Lt. Blue square and stitch on the drawn line. Repeat with the opposite corner of the same square. Trim the seam allowances to 1/4" and press open. Repeat with the other corners of the square (*figure 3*). Make eighty 4" patches.



Figure 3 – Make 80.

4. Sew the step 3 units together two by two (*figure 4*). Press the seams open. Make a total of forty strips.

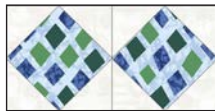


Figure 4 – Make 40.

5. Sew one step 4 unit to the left side and one to the right side of the ten 7-1/2" 1220-22 Large Floral – Pink squares (*figure 5*). Press the seams toward the center square.



Figure 5 – Make 10.

6. Noticing fabric orientation, sew one step 2 unit to

each end of one step 4 strip (*figure 6*). Press the seams away from the center. Repeat to make twenty strips.

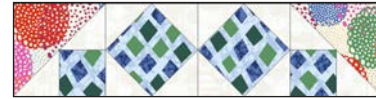


Figure 6 – Make 20.

7. Sew one step 6 strip to the top and one to the bottom of the step 5 block centers (*figure 7*). Press the seams toward the center square. Repeat to make ten 14-1/2" blocks, trimming them to size if necessary.



Figure 7 – Make 10.

8. Repeat steps 1-7 with the 2-1/4" and 4" 1223-77 Mini Floral – Navy squares, the 1224-22 Textured Diamonds – Pink triangles B, the 2-1/4" 9570-09 JotDot – Marshmallow squares and triangles C, and the 7-1/2" 1222-22 Packed Floral – Pink squares to make ten 14-1/2" blocks (*figure 8*).



Figure 8 – Make 10.

Assemble Quilt Top

9. Referring to the quilt photo for block placement, lay out the blocks and the 2" x 14-1/2" 9570-09 JotDot – Marshmallow sashing strips in five rows, and join the

Marisol - Quilt 1

Page 3

blocks and sashing strips together in each row. Press the seams toward the blocks.

10. To make the horizontal sashing rows, alternatively sew together four Marshmallow sashing strips and three 2" 7101-99 Urban Legend – Navy cornerstone squares. Repeat to make a total of four sashing strips. Press the seams toward the cornerstones.

11. Matching adjacent seams, sew block rows and horizontal sashing strips together. Press the seams in one direction.

12. For border 1, join the four 2-3/4" 9570-09 JotDot – Marshmallow strips end to end using diagonal seams. Measure the vertical length of the quilt top through the center and cut two border strips that length. Sew one strip to each side of the quilt top. Press the seams toward the border. In the same manner, join the four 2-1/2" Marshmallow strips and sew one cut strip to the top and one to the bottom of the quilt top. Press the seams toward the borders. The quilt measures 65-1/2" x 80-1/2" up to here.

13. For border 2, make four strip sets alternating the 2-1/8" and 2-1/4" strips in the order listed below. Press the seams in one direction. Cross-cut the strip sets into twenty-one 5-1/2" sections (*figure 9*). Referring to the quilt photo for placement, sew together five sections plus one three-strip section (undo the stitches of the 21st 5-1/2" section to separate two three-strip pieces) for each side border and stitch them to the sides of the quilt. Press the seams towards the center. Then, make two strips using five sections for each strip and sew one to the top and one to the bottom of the quilt. Press the seams towards the center.

Fabric (Make four strip sets as below)	Width of strip
1225-75 Bouquets - Med. Blue	2-1/8"
1221-66 Leaf Allover – Green	2-1/4"
1227-77 Brushstrokes - Navy	2-1/8"
1222-22 Packed Floral – Pink	2-1/8"
1224-22 Textured Diamonds – Pink	2-1/4"
1226-66 Abstract Geometric – Green	2-1/8"
1223-77 Mini Floral – Navy	2-1/8"
1226-33 Abstract Geometric – Orange	2-1/4"
1224-70 Textured Diamonds - Lt. Blue	2-1/8"

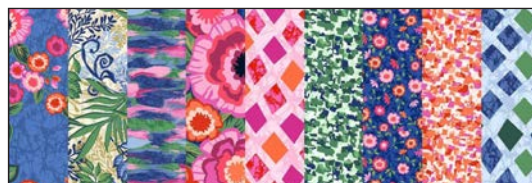


Figure 9 – Make 21.

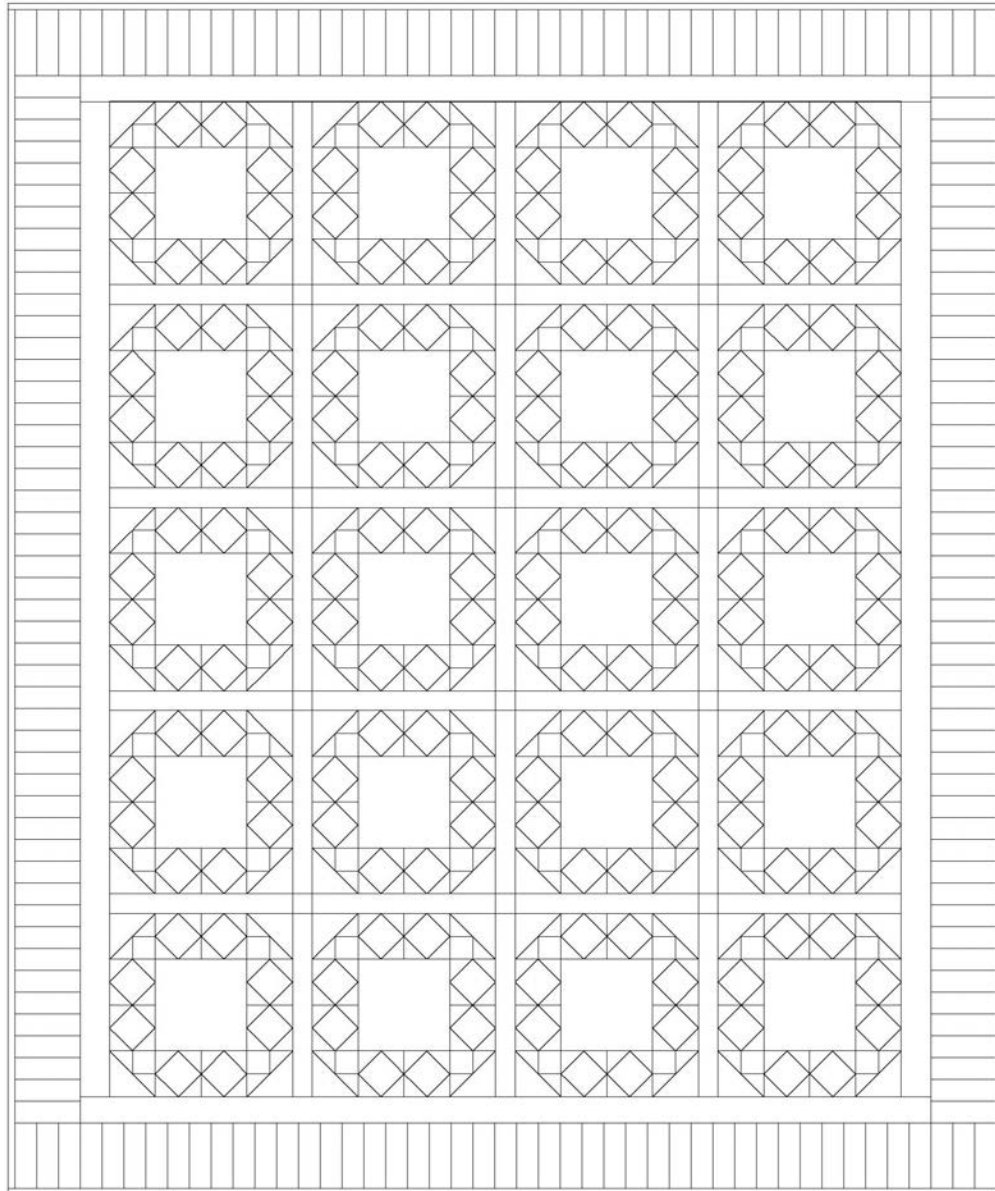
Finishing

14. Create a quilt sandwich with the batting between the quilt top and the backing. Pin or baste layers together, mark quilting design, and quilt by hand or machine. When quilting is complete, remove pins or basting and trim batting and backing even with raw edges of the quilt top.

Marisol - Quilt 1

Page 4

15. Join the nine 2-1/2" 7101-77 Urban Legend - Navy binding strips together end to end using a diagonal seam to make one long strip. Fold in half lengthwise and press. Sew binding to the edges of the quilt, mitering corners, and overlapping ends. Fold binding to the back of the quilt and stitch it in place by hand to finish.



Quilt Diagram

©2019 Blank Quilting Corporation

Every effort has been made to ensure that all projects are error free. All the information is presented in good faith; however, no warranty can be given nor results guaranteed as we have no control over the execution of instructions. Therefore, we assume no responsibility for the use of this information or damages that may occur as a result. When errors are brought to our attention, we make every effort to correct and post a revision as soon as possible. Please make sure to check www.blankquilting.net for pattern updates prior to starting the project. We also recommend that you test the project prior to cutting for kits. Finally, all free projects are intended to remain free to you and are not for resale.